

CENTRIFUGAL EXTRACTORS

BABY SERIES



BABY 2



GRUPPO

PIERALISI

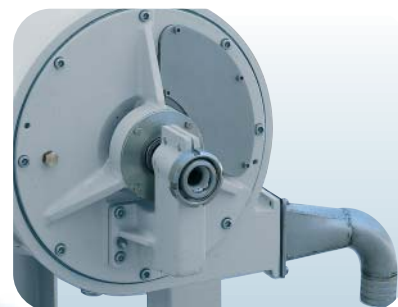
CENTRIFUGAL EXTRACTORS BABY SERIES

Our Baby series centrifugal extractors are equipped with:

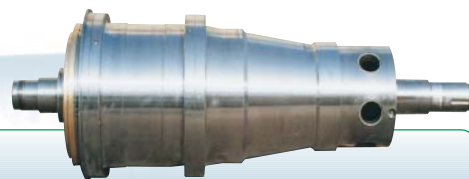
- special device to regulate the liquid ring inside the bowl
- platform and cylindric bowl housing made in carbon steel
- patented sludge scraper for continuous discharge of dewatered sludge from the solids discharge chamber
- special wear-proof protection on peripheral screw area
- electronic safety device for overload protection, with optional visual or acoustic alarm signals
- hard-metal protection bushes on solids discharge holes

- electronic revolution counter, as standard equipment.

ALL PARTS IN CONTACT WITH PRODUCT IN STAINLESS STEEL



BABY 1



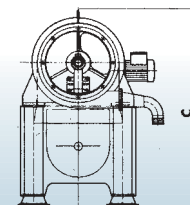
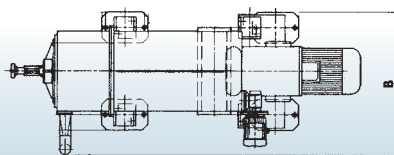
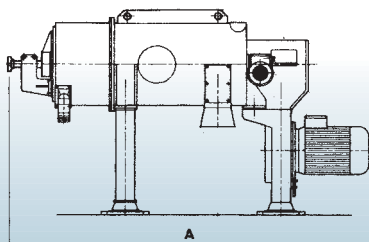
BABY 2



BABY 3



Model	Main motor power kW	Drum revolution max rpm	Centrifugal force max x g	Slenderness ratio L/D	Drum diameter mm	Hydraulic capacity l/h
BABY 1	5.5	5,200	3,500	2.48	232	2,500
BABY 2	7.5	5,200	3,500	3.33	232	4,000
BABY 3	7.5/11	5,200	3,500	4.20	232	5,500



Model	Total length A mm	Total width B mm	Total height C mm
BABY 1	1,700	785	1,090
BABY 2	1,900	785	1,090
BABY 3	2,100	785	1,090

The company reserves the right to modify the features of its products without notice. Registered trademarks. Advertising material © copyright. All rights reserved.

GRUPPO
PIERALISI

Via Don Battistoni, 1 - 60035 JESI (AN) - Italy - Tel. +39-0731-231.1 - Fax +39-0731-231.239
www.pieralisi.com - info@pieralisi.com